



## XLCT® Hydraulic Torque Wrench

The XLCT is the world's best-selling limited clearance industrial bolting system with over one hundred thousand in use around the world. Since 1992, the signature red housing has represented quality, durability and reliability on job sites in every major industry. From the tallest roller coasters to the world's largest bridges, the XLCT has the power to get the job done.

### LOCK-UP RELEASE



Like the MXT, the XLCT features a release lever that allows you to release the tool after torquing for easy removal. (Also found on the STEALTH).

### ZERO-SLIP RATCHET

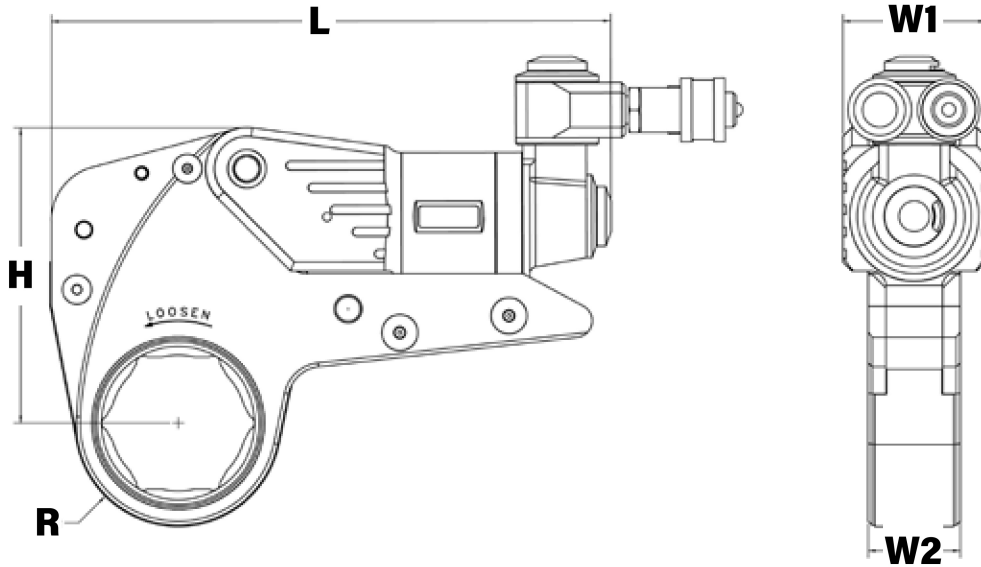


The XLCT series features a Zero-Slip ratchet for more powerful breakout and faster tightening. The secondary pawl inside the tool prevents the ratchet from turning opposite of the direction it is being driven.

### MULTI-USE ACCESSORIES



The XLCT is available with interchangeable cartridges for 6-point hex, 12-point hex, allen drives, square drives, open spanners, and many other configurations to simplify the most challenging bolting jobs.



LEGEND: H = HEIGHT W1 = WIDTH OF POWERHEAD W2 = WIDTH OF LINK L = LENGTH R = RADIUS

MODEL NUMBER	H	W1	W2	L	R		WEIGHT	TORQUE	
IMPERIAL	in.				in. (Min)	in. (Max)	lbs.	ft-lbs (Min)	ft-lbs (Max)
XLCT - 2	4.02	1.94	1.25	7.33	1.03	1.76	2.05	243	1,687
XLCT - 4	5.36	2.58	1.67	10.19	1.33	2.32	4.25	580	3,855
XLCT - 8	6.70	3.23	2.09	12.29	1.77	2.89	7.15	1,143	8,151
XLCT - 14	8.04	3.88	2.50	14.61	2.32	3.47	11.30	2,010	13,400
XLCT - 18	9.08	4.38	2.83	14.34	2.62	3.87	14.85	2,790	19,100
XLCT - 30	10.71	5.17	3.35	16.82	3.07	4.80	23.80	4,579	30,986
XLCT - 45	13.39	6.00	3.94	21.10	4.05	4.88	43.00	7,130	49,180
XLCT - 60	13.39	6.46	4.16	20.70	4.81	5.03	48.00	8,867	59,110
METRIC	mm				mm (Min)	mm (Max)	kg	Nm (Min)	Nm (Max)
XLCT - 2	102	49	32	186	26	44.70	0.93	329	2286
XLCT - 4	136	66	42	259	34	58.93	1.93	786	5224
XLCT - 8	170	82	53	312	45	73.41	3.25	1549	11045
XLCT - 14	204	99	64	371	59	88.14	5.14	2724	18157
XLCT - 18	231	111	72	364	67	98.30	6.75	3780	25881
XLCT - 30	272	131	85	427	78	121.92	10.82	6205	41986
XLCT - 45	340	152	100	536	103	124.00	19.50	9667	66679
XLCT - 60	340	164	106	526	122	128.00	21.80	12022	80143

The World's Most Trusted Industrial Bolting Systems

HYTORC owns all content, copyrights, trademarks and patents in this document. © 2021 HYTORC. Any unauthorized use or distribution of any material from this document is strictly prohibited.

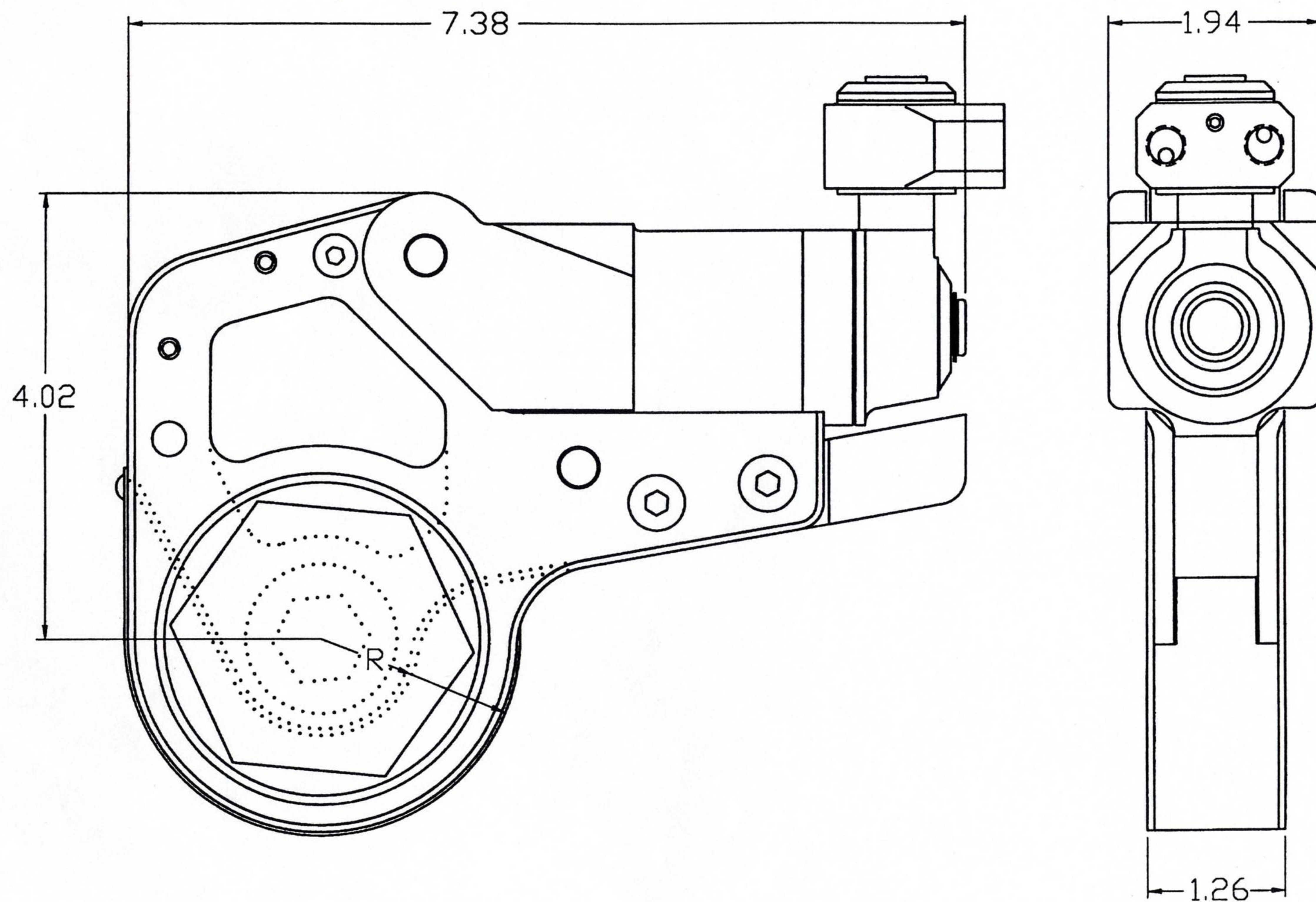


Headquarters:  
12420 TEXACO RD.  
HOUSTON, TX 77013

Phone:  
713-453-6677

Email:  
sales@hytorctexas.com

Online:  
www.hytorctexas.com

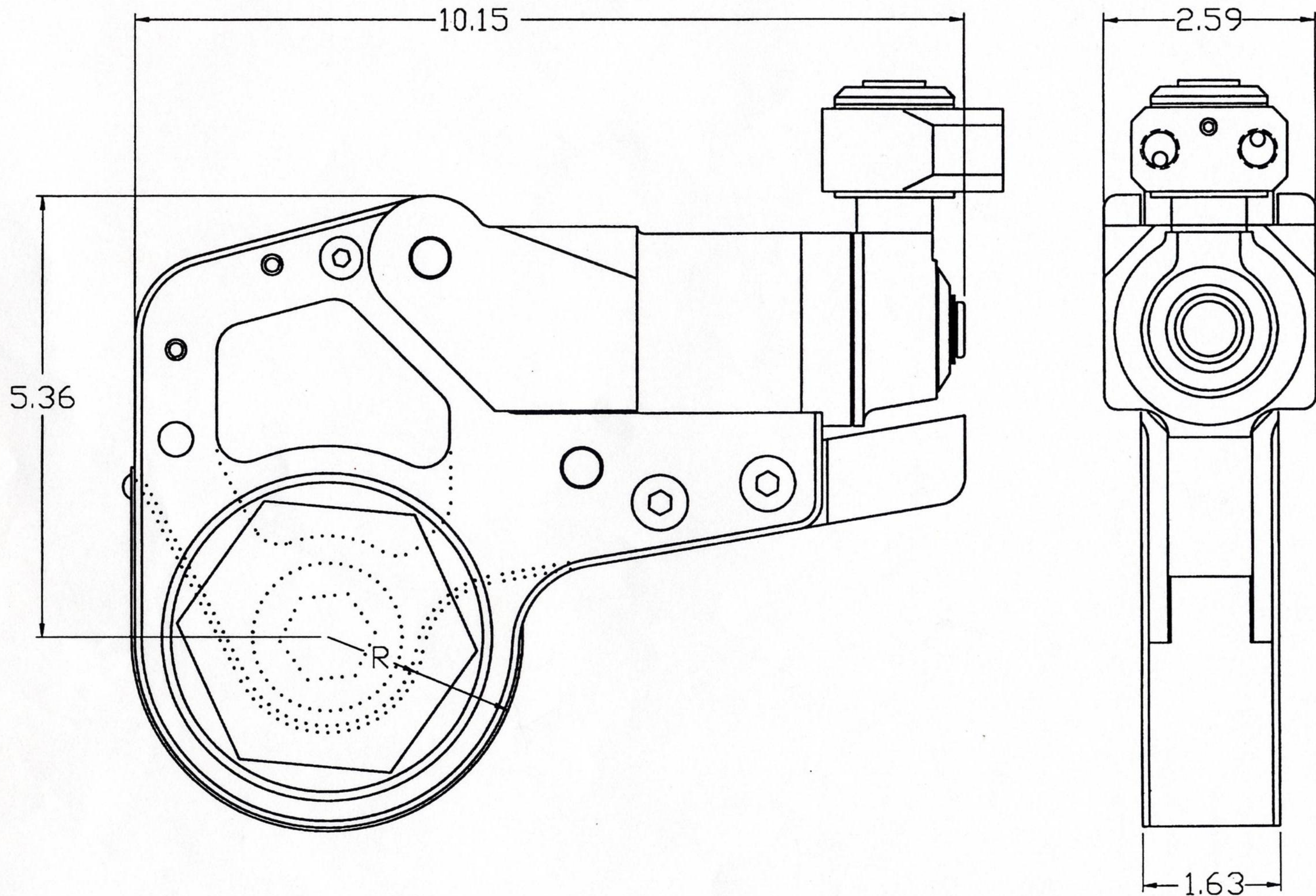


# HYTORC

## 2XLCT—LINK OUTLINE DIMENSIONS

TOOL	R	HEX SIZE inch/mm	
2XLCT	—	—————	
LINK #1	1.00	3/4 / 19	TO 1 1/8 / 27
#2	1.08	1 3/16 / 30	TO 1 1/4 / 32
#3	1.18	1 5/16 / 34	TO 1 7/16 / 36
#4	1.29	1 1/2 / 38	TO 1 5/8 / 41
#5	1.40	1 3/4 / 44	TO 1 13/16 / 46
#6	1.51	1 7/8 / 49	TO 2 / 50
#7	1.62		TO 2 3/16 / 55
#8	1.73		TO 2 3/8 / 60

\* RIGHT COLUMN IS MAX! HEX FOR LINK SIZE  
 \* HEX'S SHOWN ARE STANDARD/Common SIZES  
 ANY SIZE UNDER MAX. CAN BE MADE

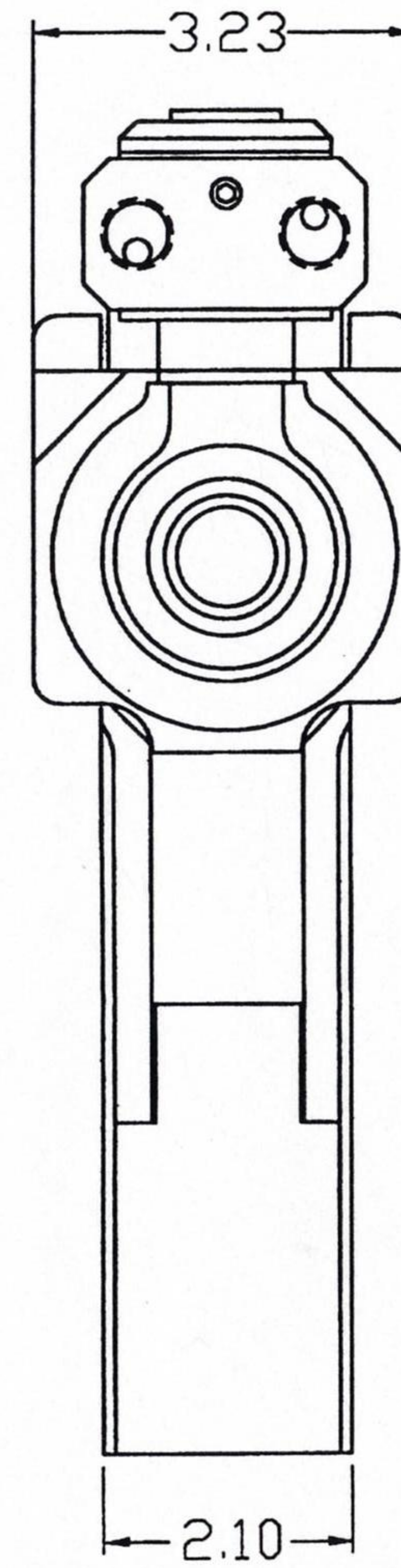
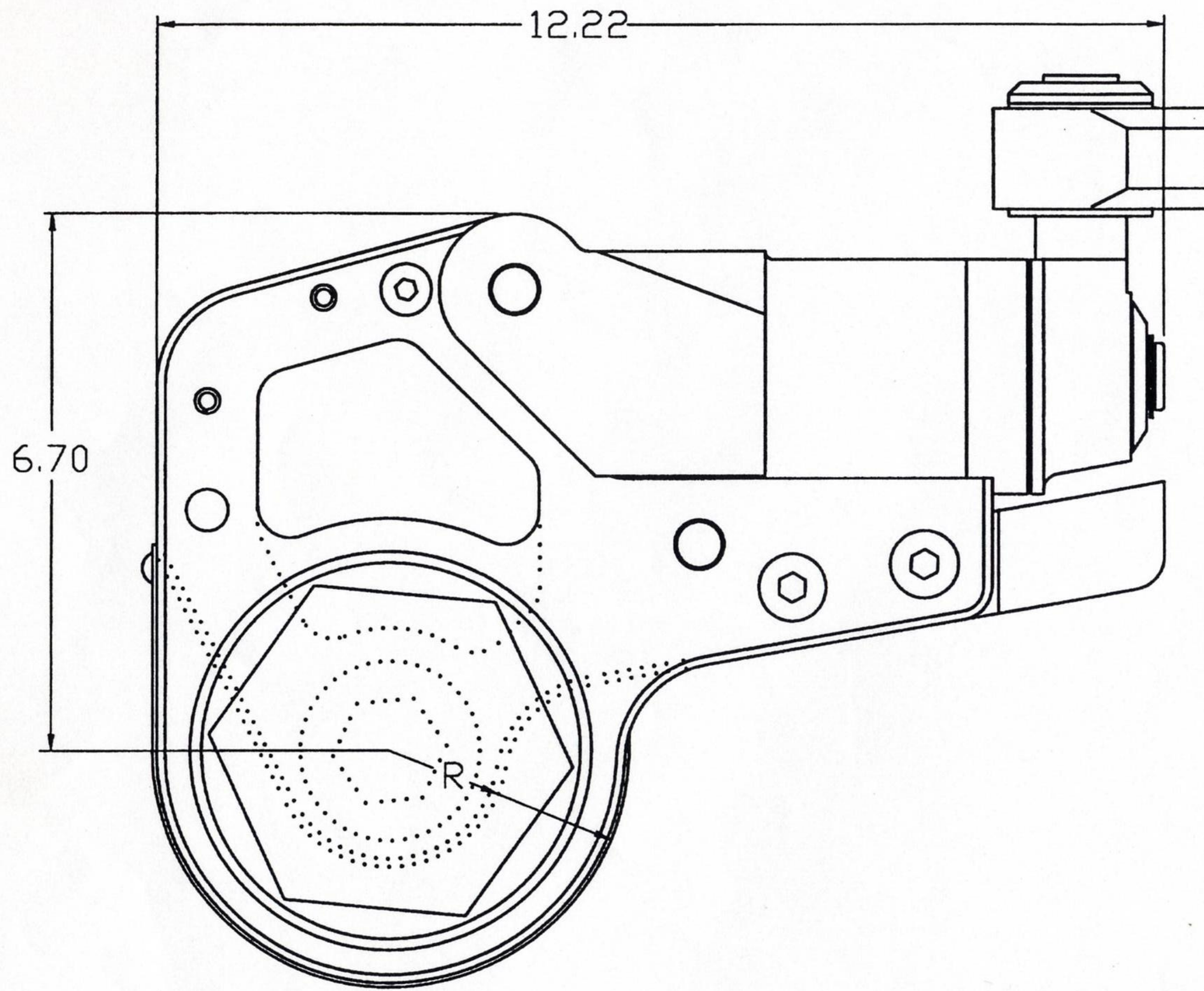


# HYTORC

## 4XLCT-LINK OUTLINE DIMENSIONS

4XLCT	R	HEX SIZE inch/mm	
LINK #1	1.30	1 5/16 / 34	TO 1 7/16 / 36
#2	1.41	1 1/2 / 38	TO 1 5/8 / 41
#3	1.52	1 3/4 / 44	TO 1 13/16 / 46
#4	1.63	1 7/8 / 49	TO 2 / 50
#5	1.74	*	TO 2 3/16 / 55
#6	1.85		TO 2 3/8 / 60
#7	1.96		TO 2 9/16 / 65
#8	2.07		TO 2 3/4 / 70
#9	2.18		TO 2 15/16 / 75
#10	2.30		TO 3 1/8 / 80

\* RIGHT COLUMN IS MAX! HEX FOR LINK SIZE  
 HEX'S SHOWN ARE STANDARD/COMMON SIZES  
 ANY SIZE UNDER MAX. CAN BE MADE

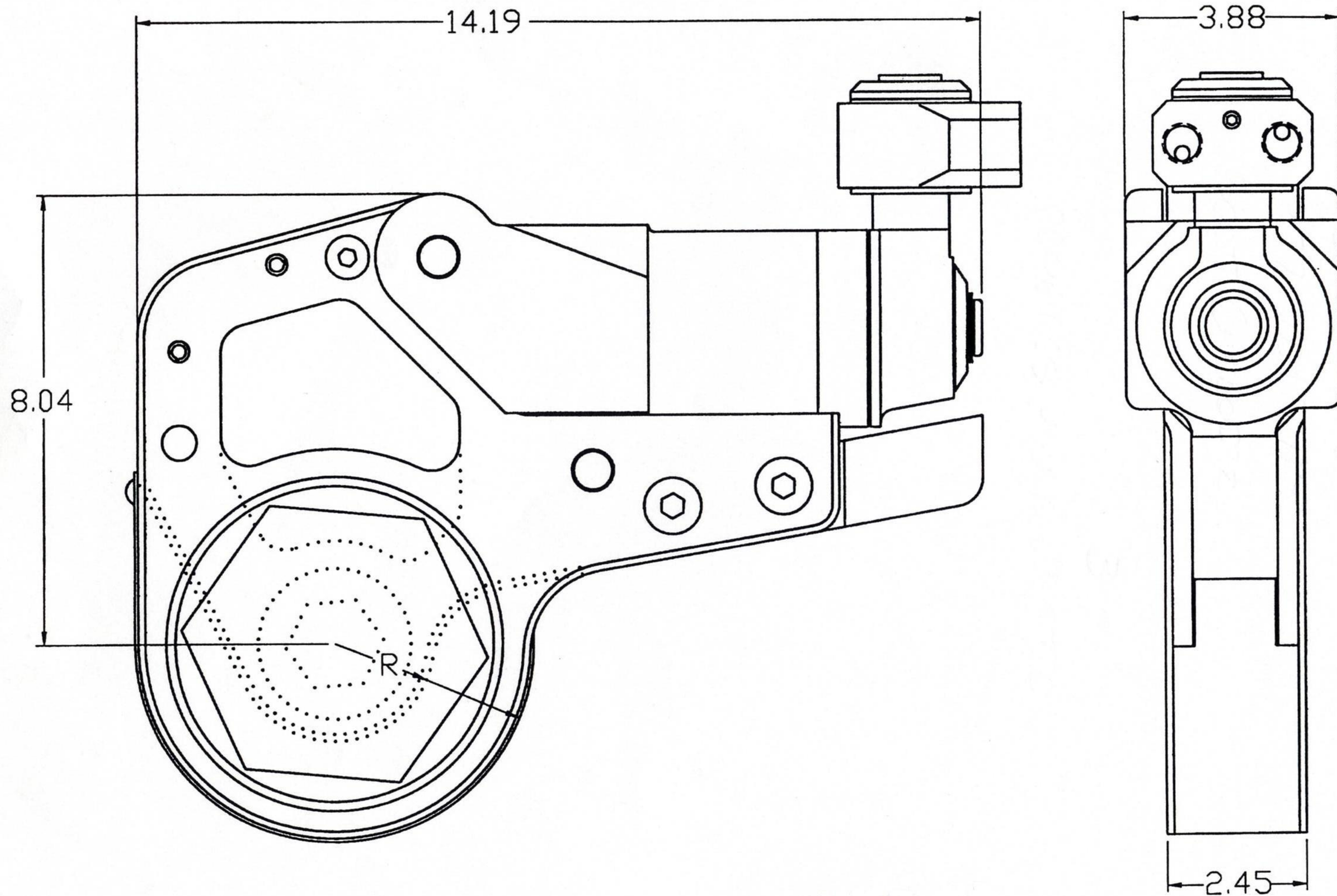


# HYTORC

## 8XLCT-LINK OUTLINE DIMENSIONS

8XLCT	R	HEX SIZE	inch/mm
LINK #1	1.74	TO	2 / 50
#2	1.85	TO	2 3/16 / 55
#3	1.96	TO	2 3/8 / 60
#4	2.07	TO	2 9/16 / 65
#5	2.18	TO	2 3/4 / 70
#6	2.30	TO	2 15/16 / 75
#7	2.41	TO	3 1/8 / 80
#8	2.53	TO	3 3/8 / 85
#9	2.64	TO	3 1/2 / 90
#10	2.76	TO	3 3/4 / 95
#11	2.87	TO	3 7/8 / 100

\* RIGHT COLUMN IS MAX! HEX FOR LINK SIZE  
 \* HEX'S SHOWN ARE STANDARD/COMMON SIZES  
 ANY SIZE UNDER MAX. CAN BE MADE

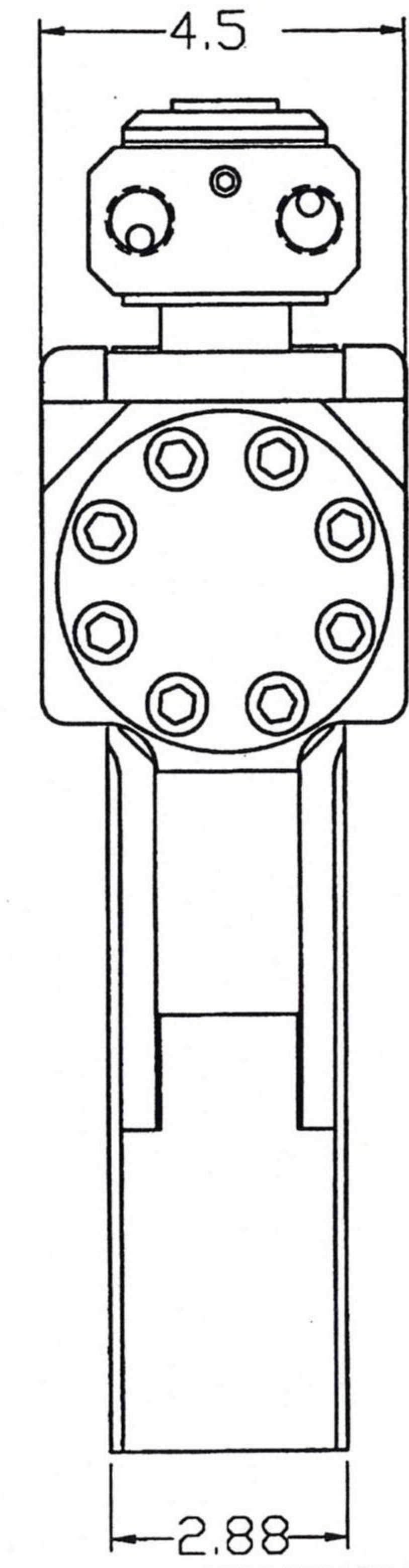
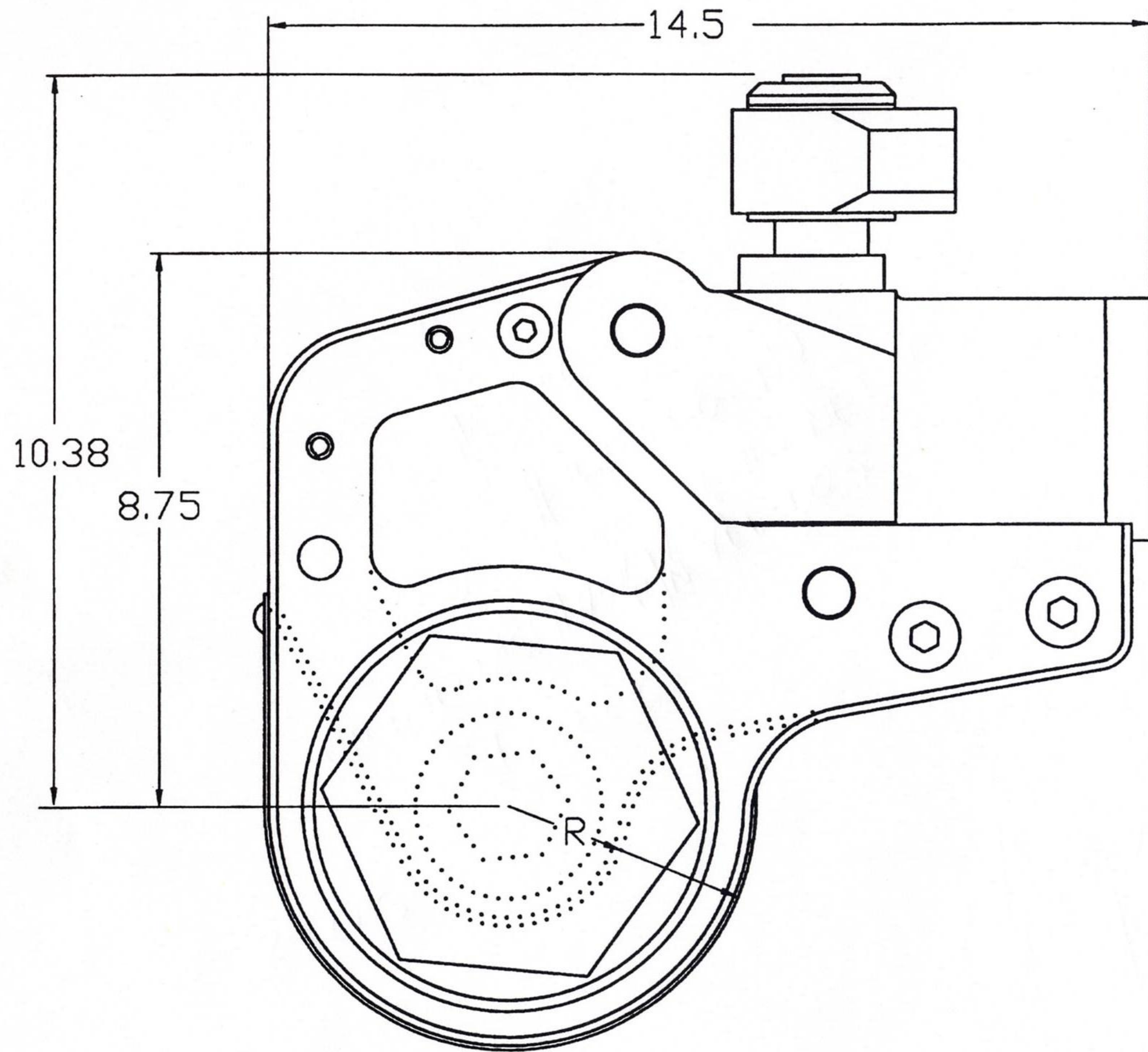


# HYTORC

## 14XLCT-LINK OUTLINE DIMENSIONS

14XLCT	R	HEX SIZE inch/mm	
LINK #1	2.30	TO	2 3/4 / 70
#2	2.41	TO	2 15/16 / 75
#3	2.53	TO	3 1/8 / 80
#4	2.65	TO	3 3/8 / 85
#5	2.75	TO	3 1/2 / 90
#6	2.88	TO	3 3/4 / 95
#7	2.98	TO	3 7/8 / 100
#8	3.10	TO	4 1/8 / 105
#9	3.21	TO	4 1/4 / 110
#10	3.44	TO	4 5/8 / 120

\* RIGHT COLUMN IS MAX! HEX FOR LINK SIZE  
 \* HEX'S SHOWN ARE STANDARD/COMMON SIZES  
 ANY SIZE UNDER MAX. CAN BE MADE

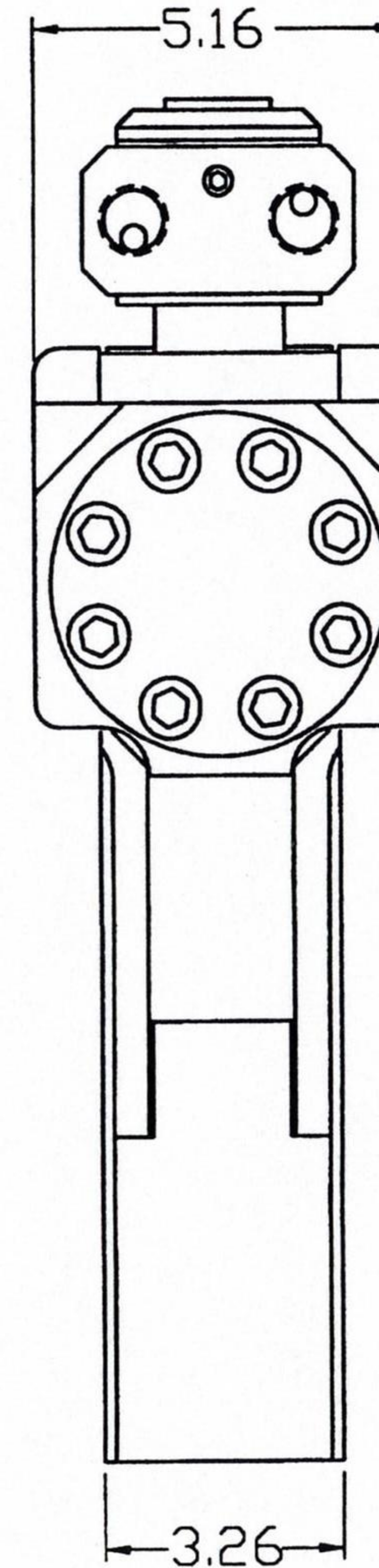
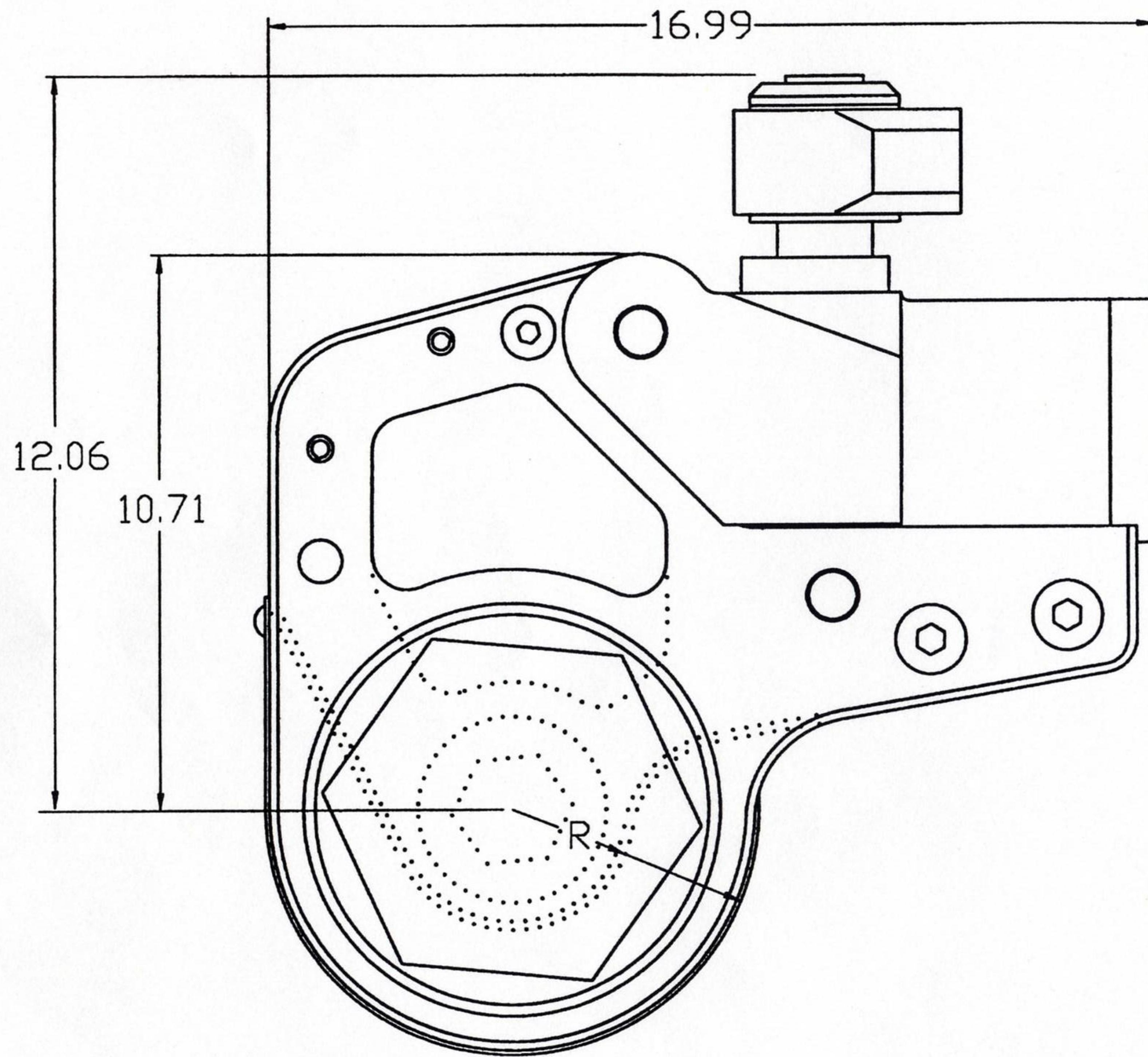


# HYTORC

## 18XLCT-LINK OUTLINE DIMENSIONS

18 XLCT	R	HEX SIZE inch/mm
LINK #1	2.54	TO 2 15/16 / 75
#2	2.65	TO 3 1/8 / 80
#3	2.88	TO 3 1/2 / 90
#4	3.11	TO 3 7/8 / 100
#5	3.34	TO 4 1/4 / 110
#6	3.56	TO 4 5/8 / 120
#7	3.78	TO 5" / 130
#8	3.95	TO 5 3/8 / 135
#9	4.17	5 3/4 / 145
#10	4.39	6 1/8 / 155

\* RIGHT COLUMN IS MAX! HEX FOR LINK SIZE  
 \* HEX'S SHOWN ARE STANDARD/COMMON SIZES  
 ANY SIZE UNDER MAX. CAN BE MADE



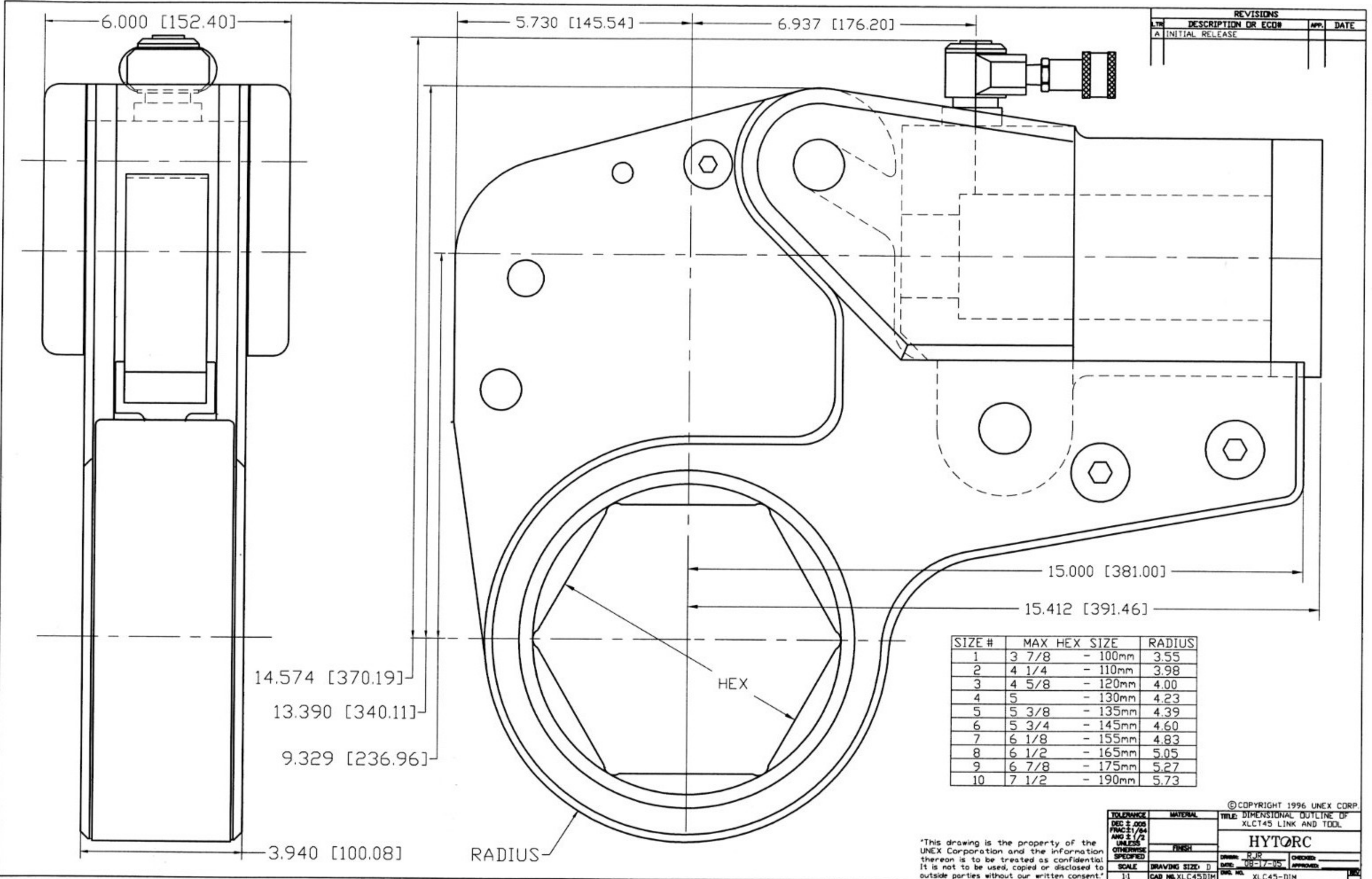
# HYTORC

## 30XLCT-LINK OUTLINE DIMENSIONS

30XLCT	R	HEX SIZE inch/mm	
LINK #1	2.98	TO	3 1/2 / 90
#2	3.21	TO	3 7/8 / 100
#3	3.44	TO	4 1/4 / 110
#4	3.67	TO	4 5/8 / 120
#5	3.89	TO	5" / 130
#6	4.05	TO	5 3/8 / 135
#7	4.27	TO	5 3/4 / 145
#8	4.49	TO	6 1/8 / 155

\* RIGHT COLUMN IS MAX! HEX FOR LINK SIZE  
 \* HEX'S SHOWN ARE STANDARD/COMMON SIZES  
 ANY SIZE UNDER MAX. CAN BE MADE



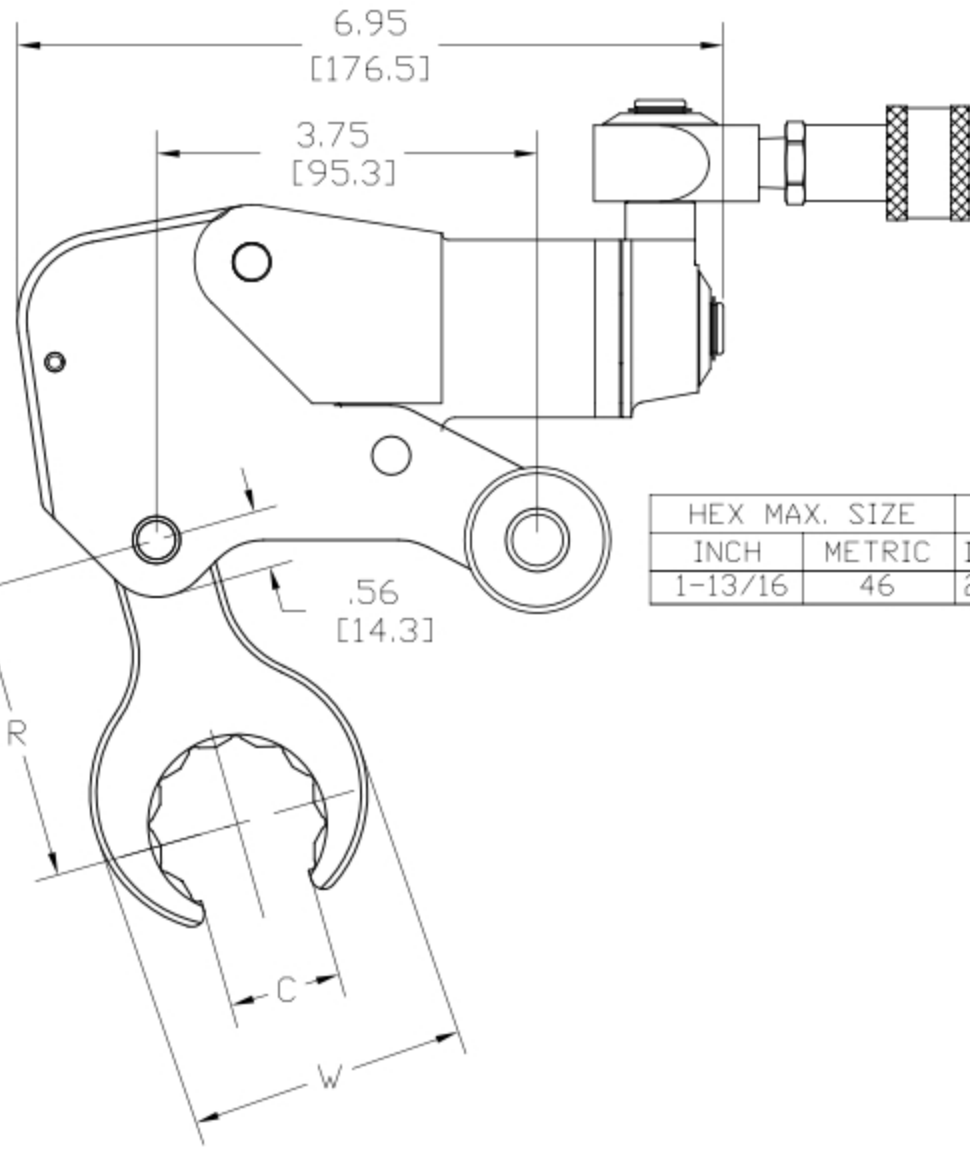
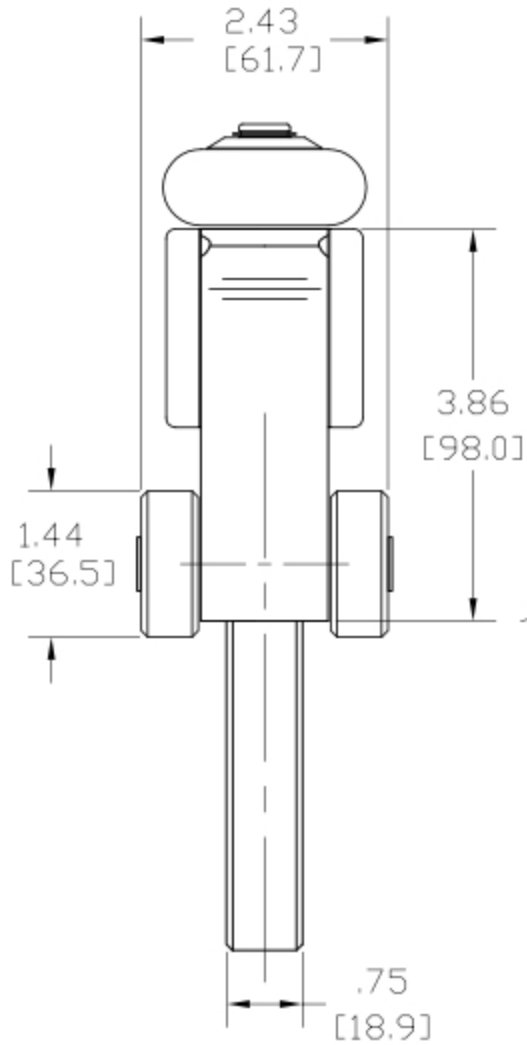


REVISIONS			
REV	DESCRIPTION OR ECOB	APP.	DATE
A	INITIAL RELEASE		

\*This drawing is the property of the UNEX Corporation and the information thereon is to be treated as confidential. It is not to be used, copied or disclosed to outside parties without our written consent.\*

TOLERANCE DEC ± .008 FRAC ± 1/64 ANG ± 1/2 UNLESS OTHERWISE SPECIFIED	MATERIAL	TITLE: DIMENSIONAL OUTLINE OF XLC45 LINK AND TOOL
SCALE 1:1	DRAWING SIZE: D	HYTORC
CAD NO. XLC45DIM	DATE: 08-17-05	DRW. NO. XLC45-DIM

© COPYRIGHT 1996 UNEX CORP.



HEX MAX. SIZE		R		C		W	
INCH	METRIC	INCH	MM	INCH	MM	INCH	MM
1-13/16	46	2.91	73.9	1.21	30.7	3.68	93.5

This drawing is the property of the UNEX Corporation and the information thereon is to be treated as confidential. It is not to be used, copied or disclosed to outside parties without our written consent.

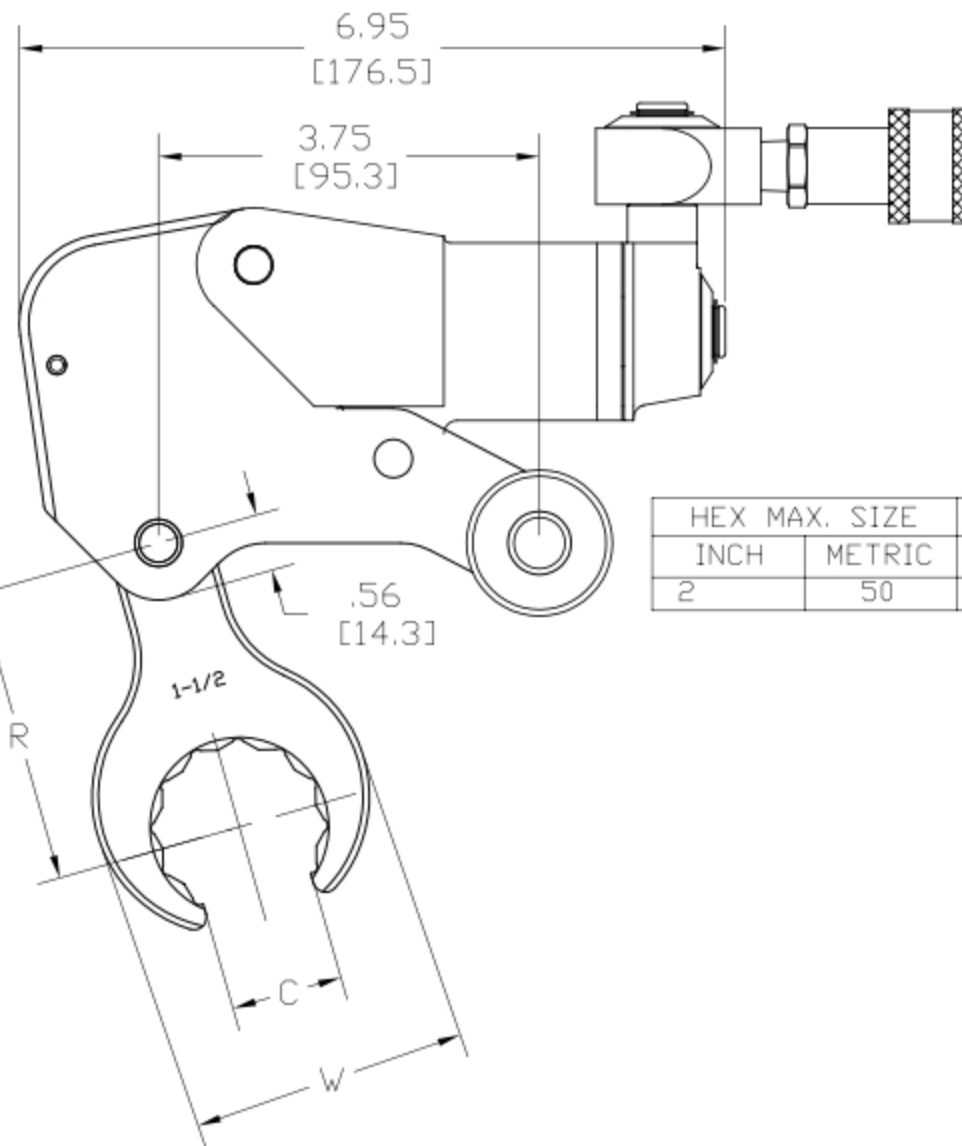
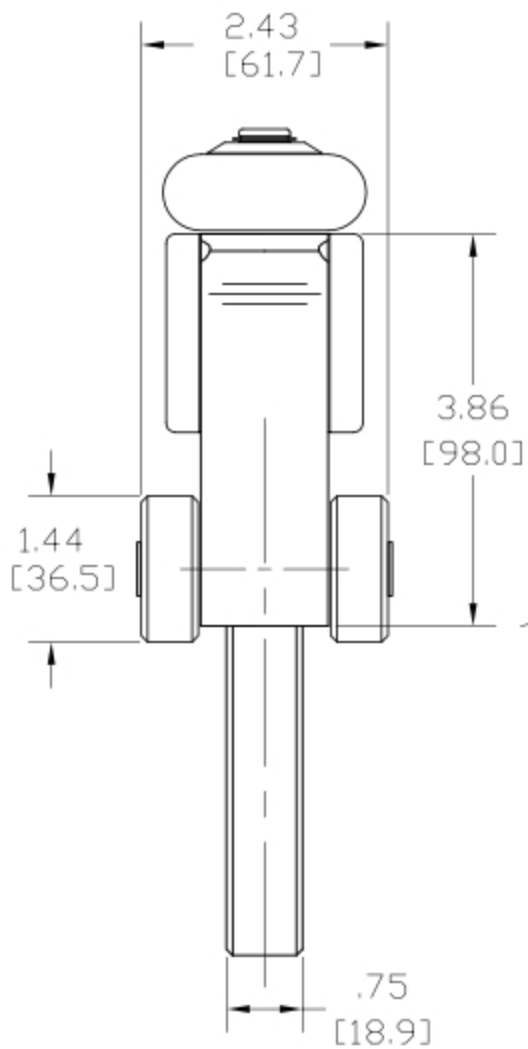
© COPYRIGHT 2006, UNEX CORP.

TITLE: 2XLCT AB OPEN SPANNER  
113 DIMENSIONAL OUTLINE

**HYTORC**

DRAWN: CB DATE: \_\_\_\_\_

DWG. NO. 2XLCT-ABOSL-113-DIM CAD NO. 2XLCT-AB-DIM



HEX MAX. SIZE		R		C		W	
INCH	METRIC	INCH	MM	INCH	MM	INCH	MM
2	50	3.06	77.7	1.45	36.8	3.70	94.0

This drawing is the property of the UNEX Corporation and the information thereon is to be treated as confidential. It is not to be used, copied or disclosed to outside parties without our written consent.

© COPYRIGHT 2006, UNEX CORP.

TITLE 2XLCT AB OPEN SPANNER  
DIMENSIONAL OUTLINE

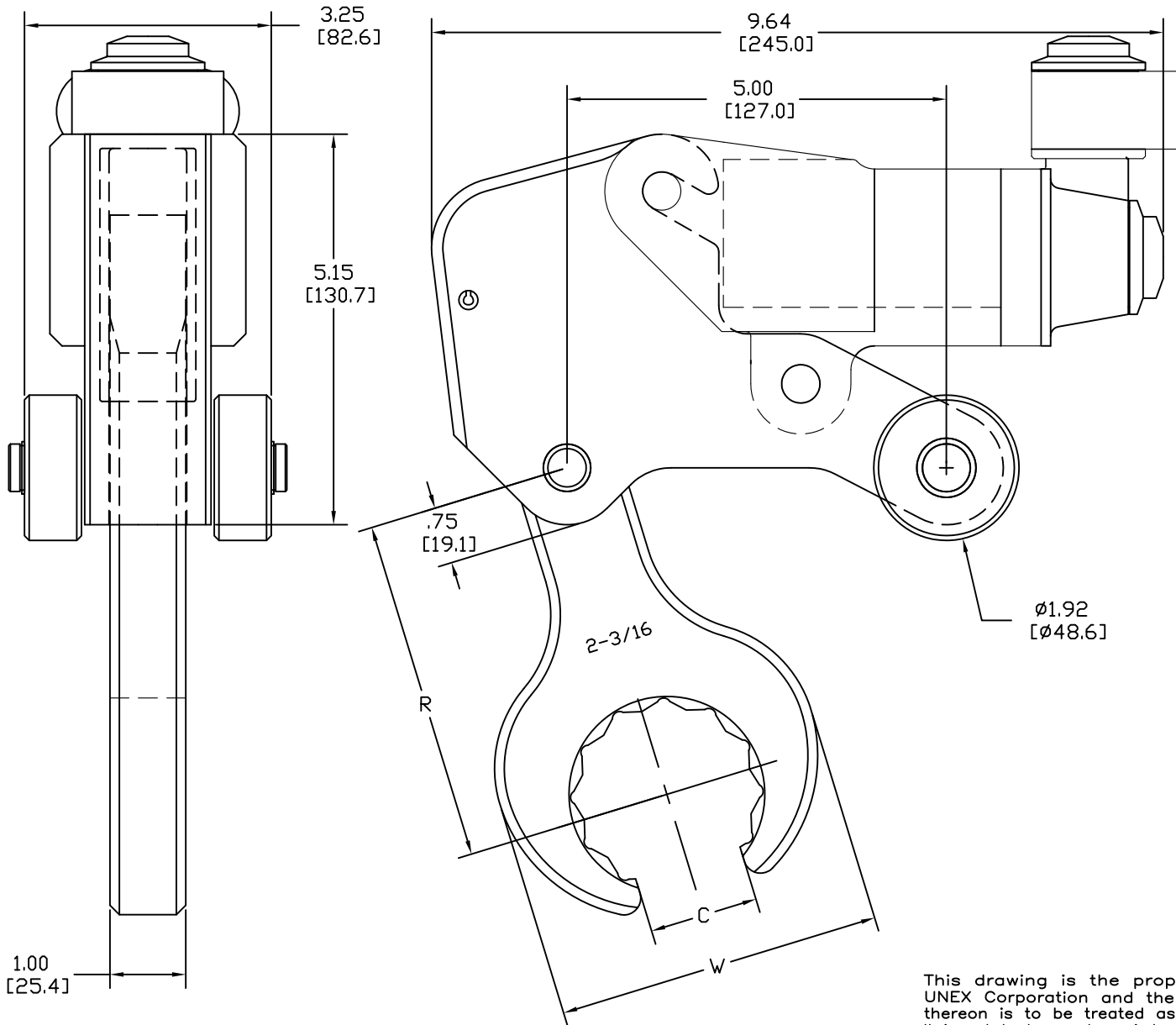
**HYTORC**

DRAWN: DM

DATE: 1/27/11

DWG. NO.  
2XLCT-ABOSL-DIM

CAD NO.  
2XLCT-AB-DIM



HEX	R		C		W	
METRIC	INCH	MM	INCH	MM	INCH	MM
36	3.50	88.9	.74	18.8	2.74	69.6
41	4.50	114.3	1.07	27.2	3.07	77.9
46	4.50	114.3	1.19	30.2	3.66	92.9
50	4.50	114.3	1.32	33.5	3.55	90.0
55	4.50	114.3	1.42	36.1	4.29	108.9
60	4.50	114.3	1.57	39.9	4.29	108.9
65	4.50	114.3	2.19	55.6	4.49	114
70	4.65	118.1	1.82	46.2	5.20	132.1
75	5.00	127	1.95	49.5	5.23	132.8
80	5.00	127	2.08	52.8	5.95	151.1

HEX	R		C		W	
INCH	INCH	MM	INCH	MM	INCH	MM
1-7/16	4.50	114.3	.95	24.1	2.90	73.7
1-5/8	4.50	114.3	1.07	27.2	3.07	77.9
1-13/16	4.50	114.3	1.19	30.2	3.66	92.9
1-7/8	4.50	114.3	1.23	31.2	3.55	90.2
2	4.50	114.3	1.32	33.5	3.55	90.2
2-3/16	4.50	114.3	1.44	36.5	4.29	108.9
2-1/4	4.50	114.3	1.57	39.9	4.29	108.9
2-3/8	4.50	114.3	1.57	39.9	4.29	108.9
2-9/16	4.50	114.3	1.68	42.6	4.50	114.3
2-5/8	4.50	114.3	1.72	43.7	5.05	128.3
2-3/4	4.50	114.3	1.80	45.7	5.05	128.3
2-15/16	5.00	127	1.95	49.5	5.23	132.8
3-1/8	5.00	127	2.08	52.8	5.95	151.1

© COPYRIGHT 2006, UNEX CORP.

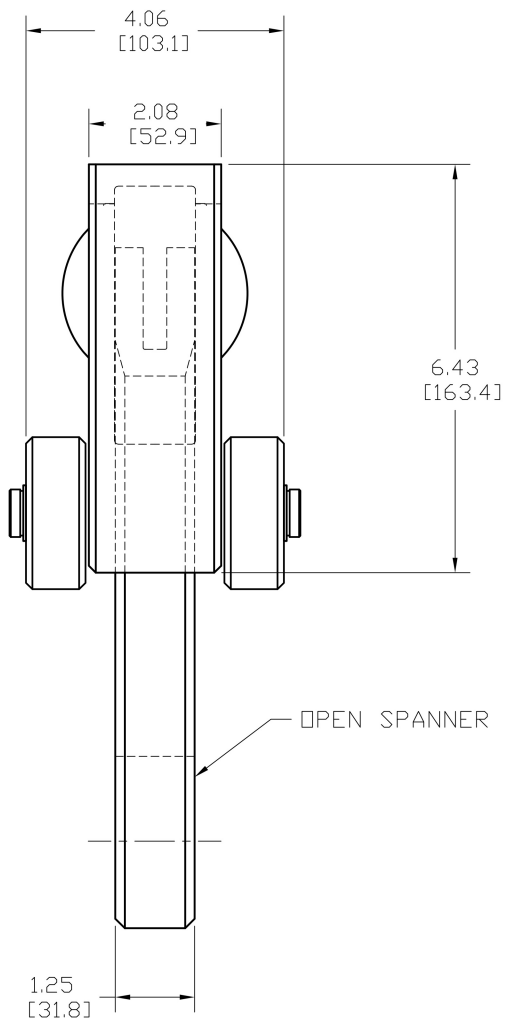
TITLE: 4XLCT AB OPEN SPANNER  
DIMENSIONAL OUTLINE

**HYTORC**

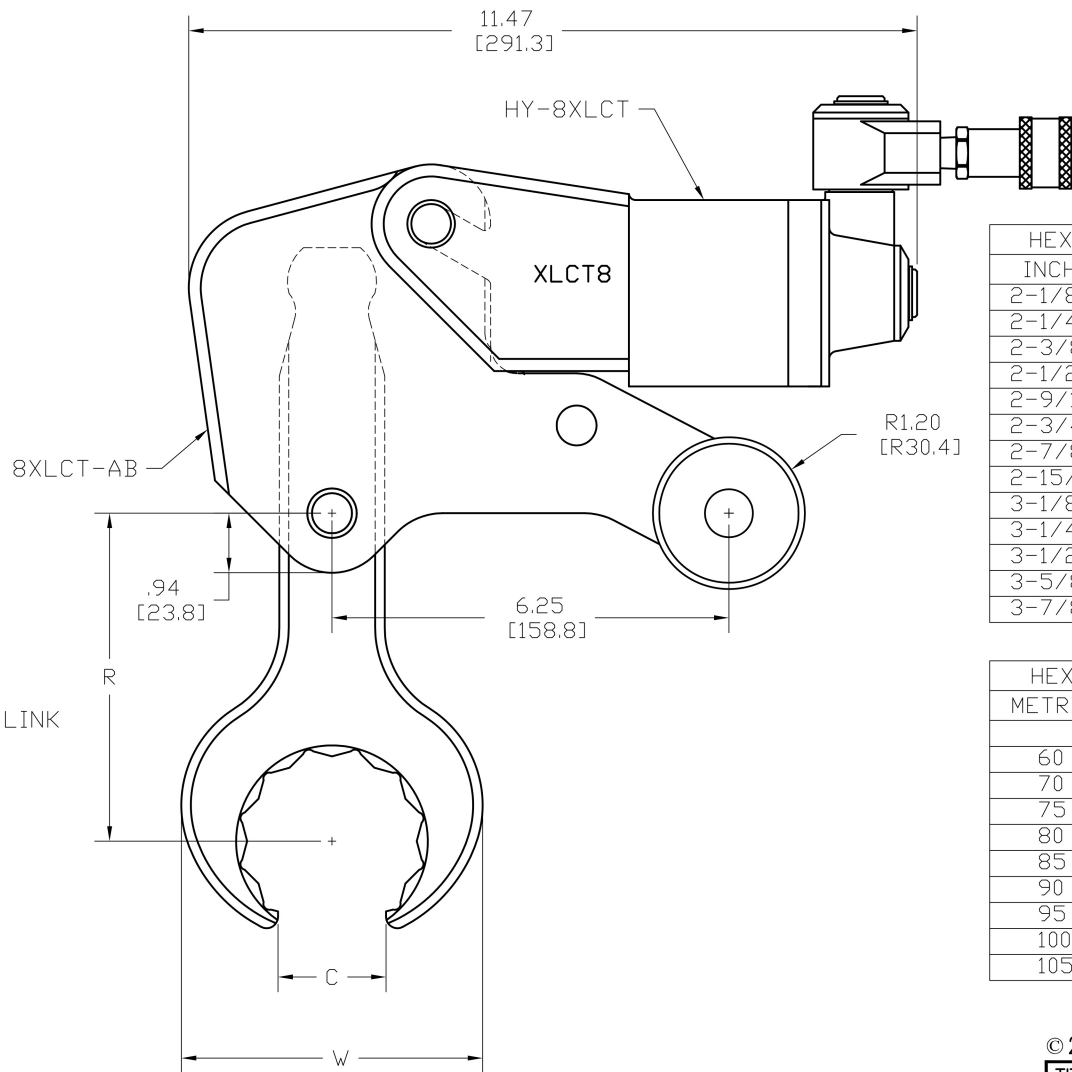
DRAWN: D.M. DATE: 2/11/11

DWG. NO. 4XLCT-ABOSL-DIM CAD NO. 4XLCT-AB-DIM

This drawing is the property of the UNEX Corporation and the information thereon is to be treated as confidential. It is not to be used, copied or disclosed to outside parties without our written consent.



OPEN SPANNER LINK



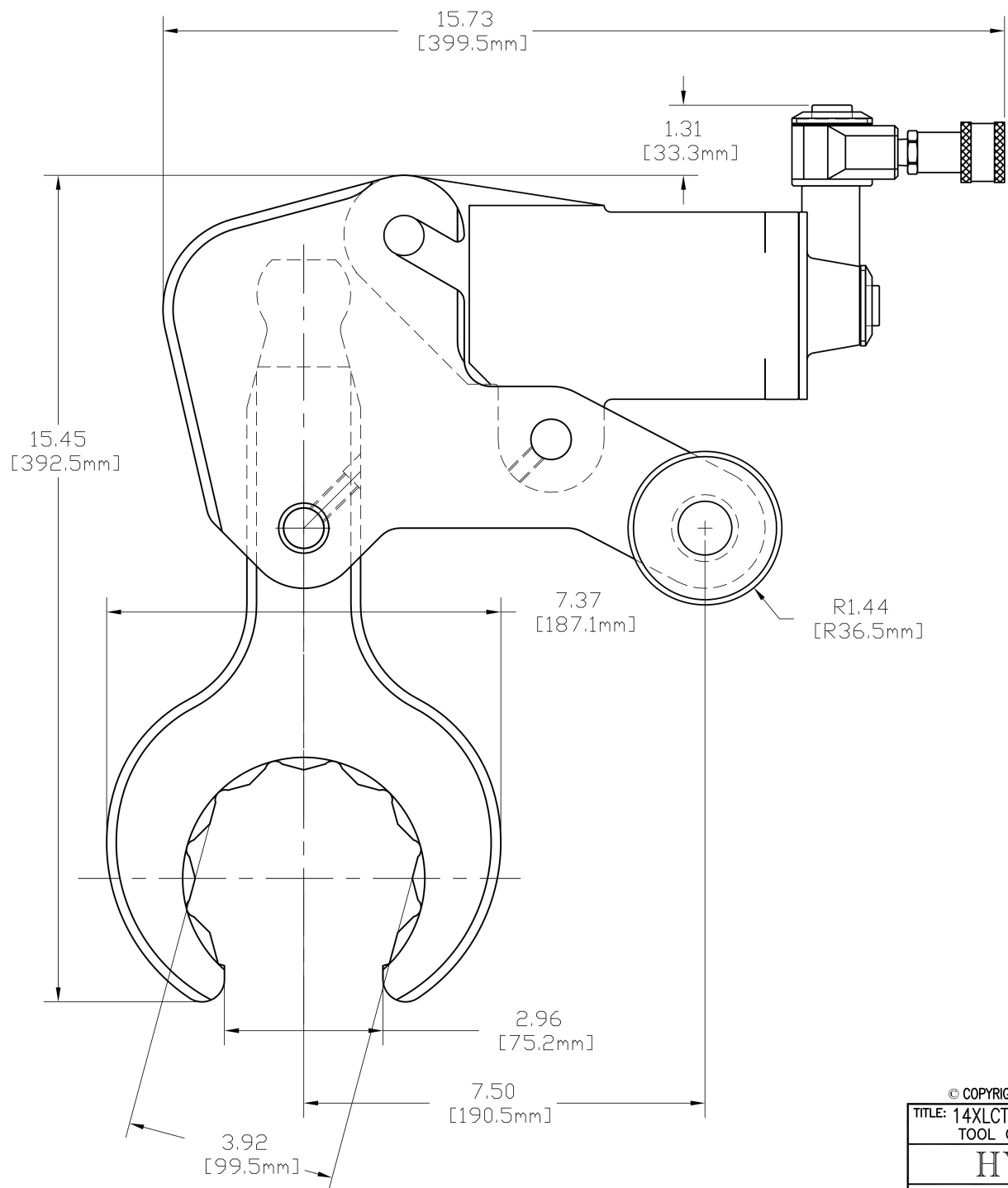
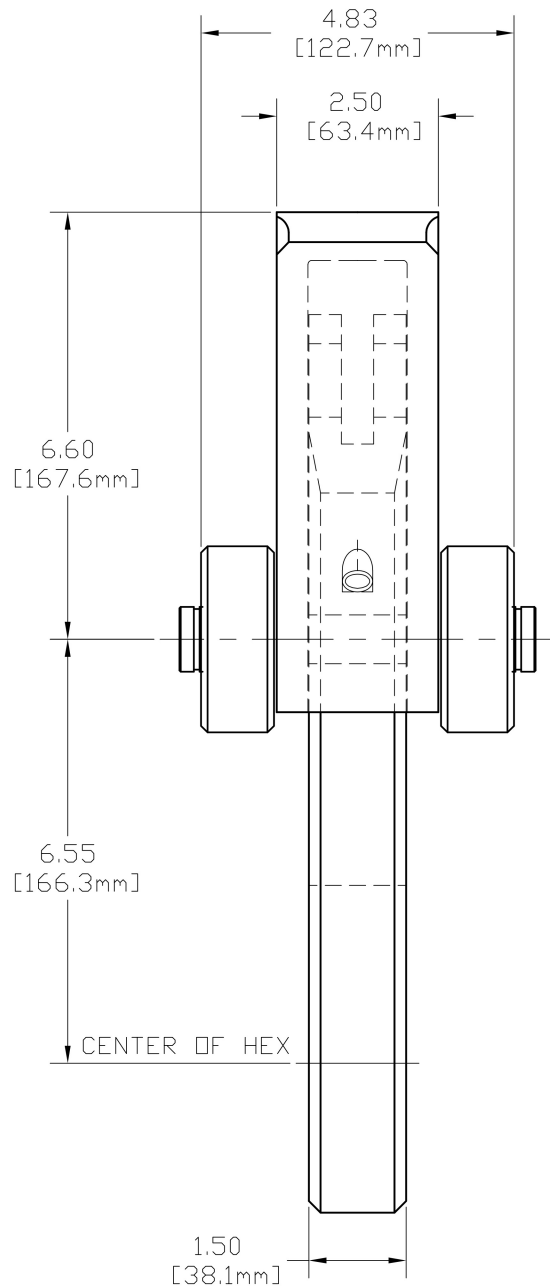
HEX	R		C		W	
INCH	INCH	MM	INCH	MM	INCH	MM
2-1/8	5.71	145.0	1.40	35.5	4.25	107.9
2-1/4	5.17	131.3	1.57	39.9	4.74	120.4
2-3/8	5.17	131.3	1.57	39.9	4.74	120.4
2-1/2	5.17	131.3	1.66	42.1	4.74	120.4
2-9/16	5.17	131.3	1.70	43.2	4.74	120.4
2-3/4	5.25	133.3	1.84	46.7	5.26	133.6
2-7/8	5.29	134.3	1.92	48.7	5.75	146.0
2-15/16	5.29	134.3	1.92	48.7	5.75	146.0
3-1/8	5.50	139.7	1.97	50.0	5.93	150.6
3-1/4	5.50	139.7	2.14	54.3	6.43	163.3
3-1/2	5.50	139.7	2.36	59.9	6.43	163.3
3-5/8	5.50	139.7	2.40	60.9	6.57	166.8
3-7/8	5.50	139.7	2.56	65.0	7.01	178.0

HEX	R		C		W	
METRIC	INCH	MM	INCH	MM	INCH	MM
60	5.17	131.3	1.54	39.1	4.74	120.4
70	5.25	133.3	1.84	46.7	5.26	133.6
75	5.29	134.3	1.96	49.7	5.75	146.0
80	5.29	134.3	2.10	53.3	6.01	152.6
85	5.30	134.6	2.29	58.1	6.38	162.0
90	5.50	139.7	2.42	61.5	6.43	163.3
95	5.53	140.4	2.57	65.3	6.79	172.4
100	5.50	139.7	2.57	65.3	7.01	178.0
105	5.85	148.6	2.72	69.1	7.44	188.9

This drawing is the property of the UNEX Corporation and the information thereon is to be treated as confidential. It is not to be used, copied or disclosed to outside parties without our written consent.

© 2008, HYTORC, DIV. UNEX CORPORATION

TITLE: 8XLCT AB OUTLINE OPEN SPANNER LINK	
<b>HYTORC</b> <i>Since 1968</i>	
DRAWN: D.M.	DATE: 9/6/11
DWG. NO. 8XLCT-ABOSL-DIM	CAD NO. 8XLCT-ABSL-DIM



This drawing is the property of the UNEX Corporation and the information thereon is to be treated as confidential. It is not to be used, copied or disclosed to outside parties without our written consent.

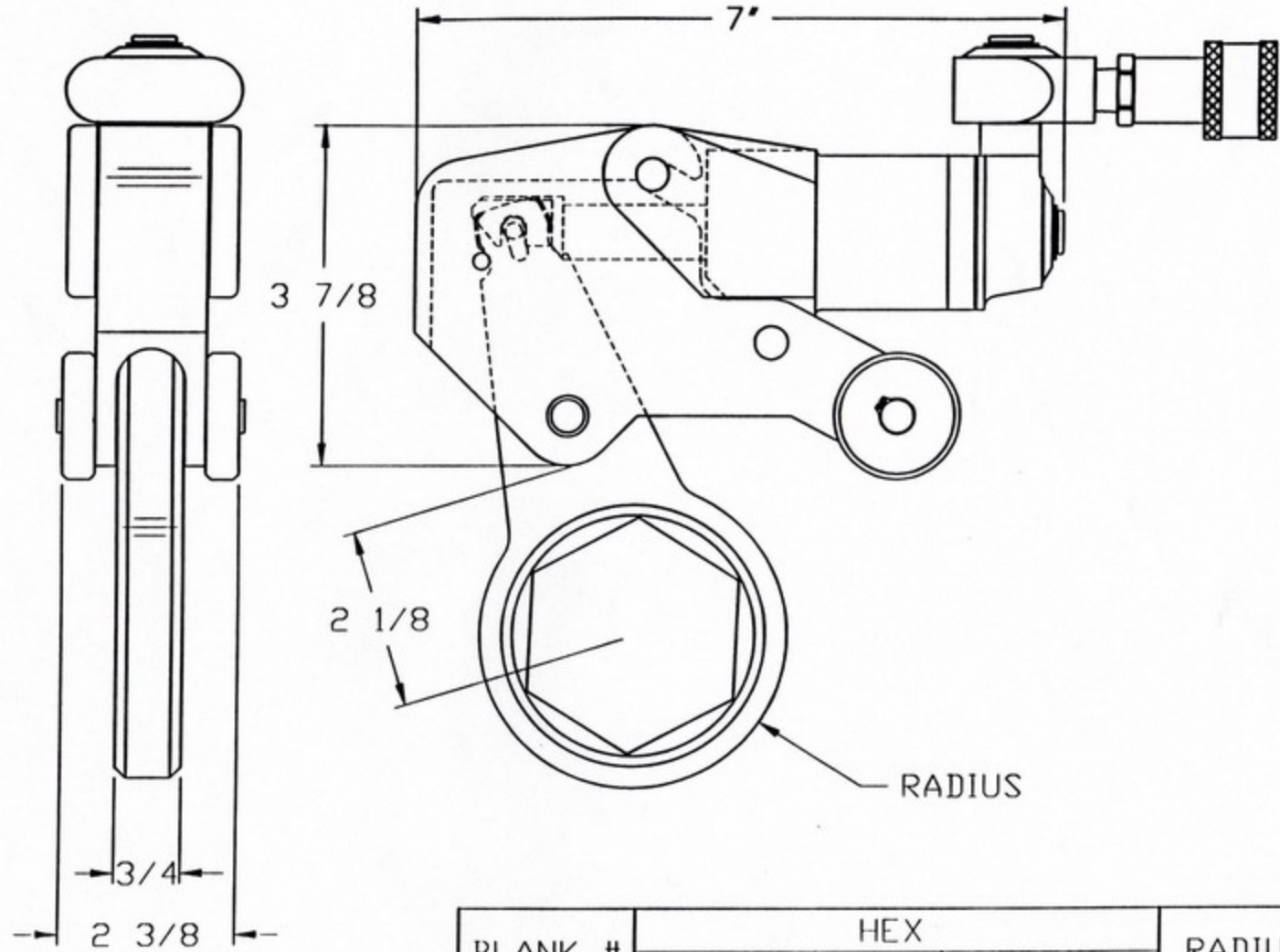
© COPYRIGHT 2006, UNEX CORP.

TITLE: 14XLCT AB OPEN SPANNER  
TOOL OUTLINE - 314 LINK

**HYTORC**

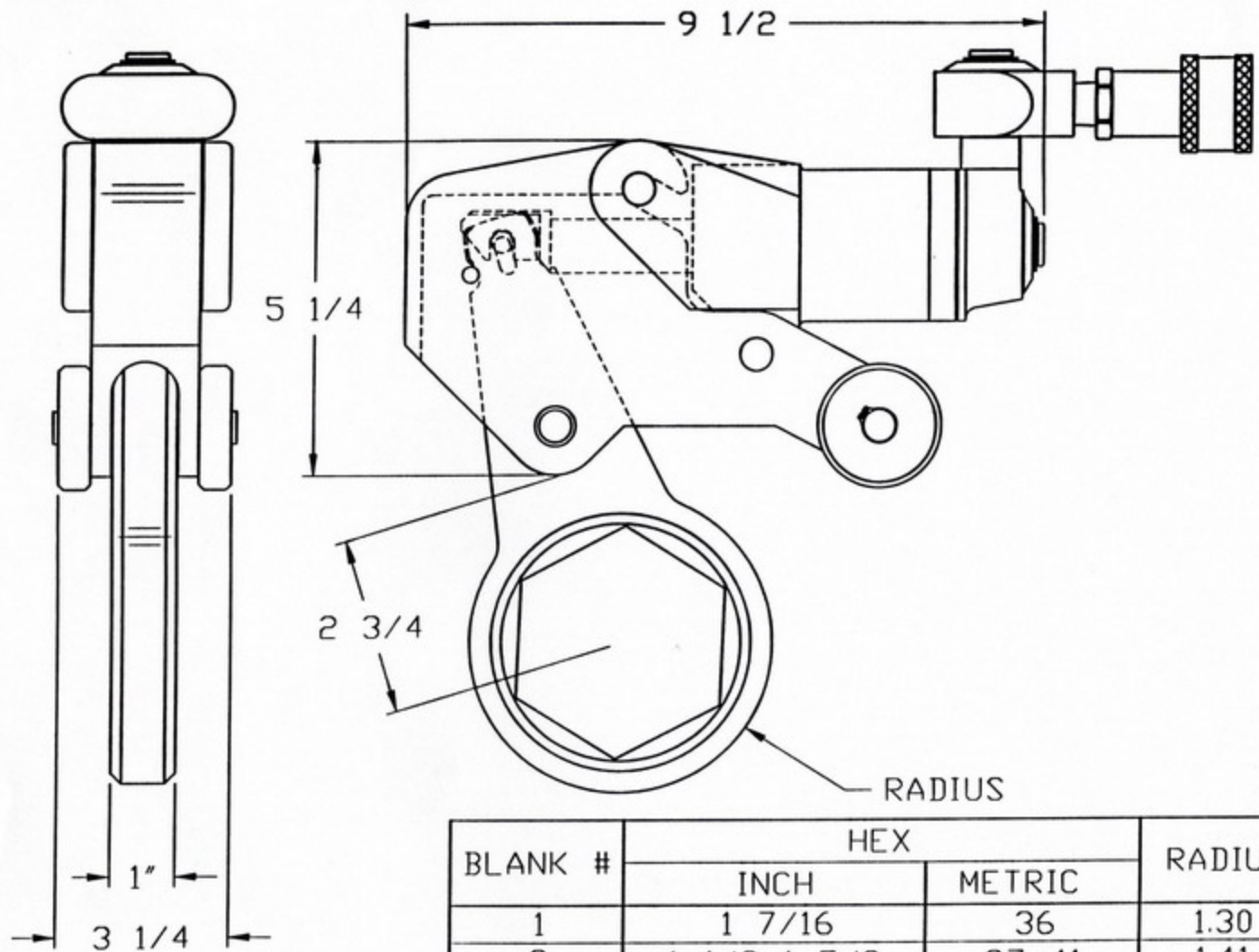
DRAWN: CB DATE: 7/25/17

DWG. NO. 14XLCT-ABM314-OS-DIM CAD NO. 14XLCT-AB314-OS-DIM



2XLCT AB TYPE  
RATCHET LINK

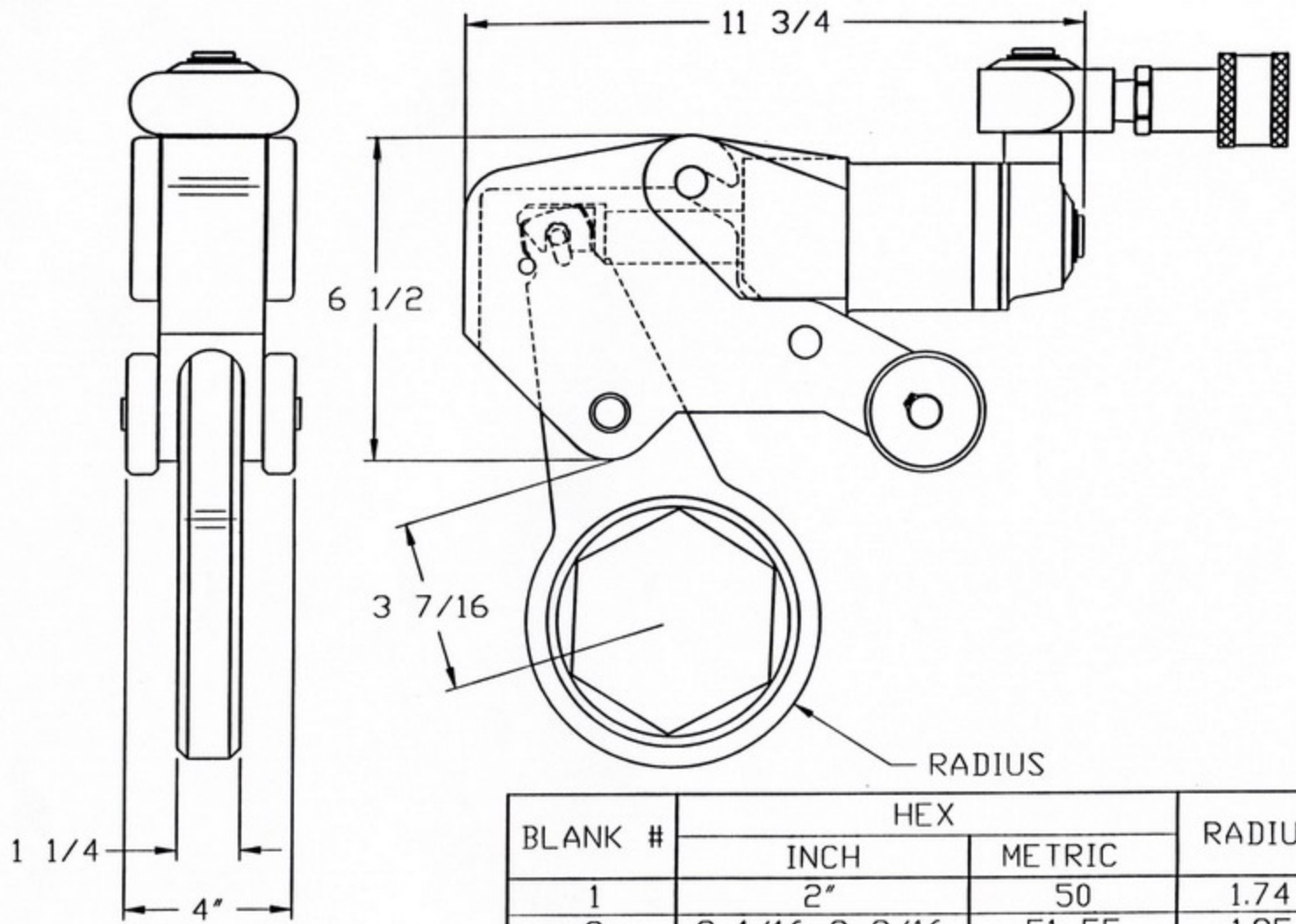
BLANK #	HEX		RADIUS
	INCH	METRIC	
1	1 1/8	28	1.0
2	1 3/16-1 1/4	29-32	1.08
3	1 5/16-1 7/16	33-36	1.18
4	1 1/2-1 5/8	37-41	1.29
5	1 11/16-1 13/16	42-46	1.40
6	1 7/8-2"	47-50	1.51
7	2 1/16-2 3/16	51-55	1.62
8	2 1/4-2 3/8	56-60	1.73
9	2 7/16-2 9/16	61-65	1.84



4XLCT AB TYPE  
RATCHET LINK

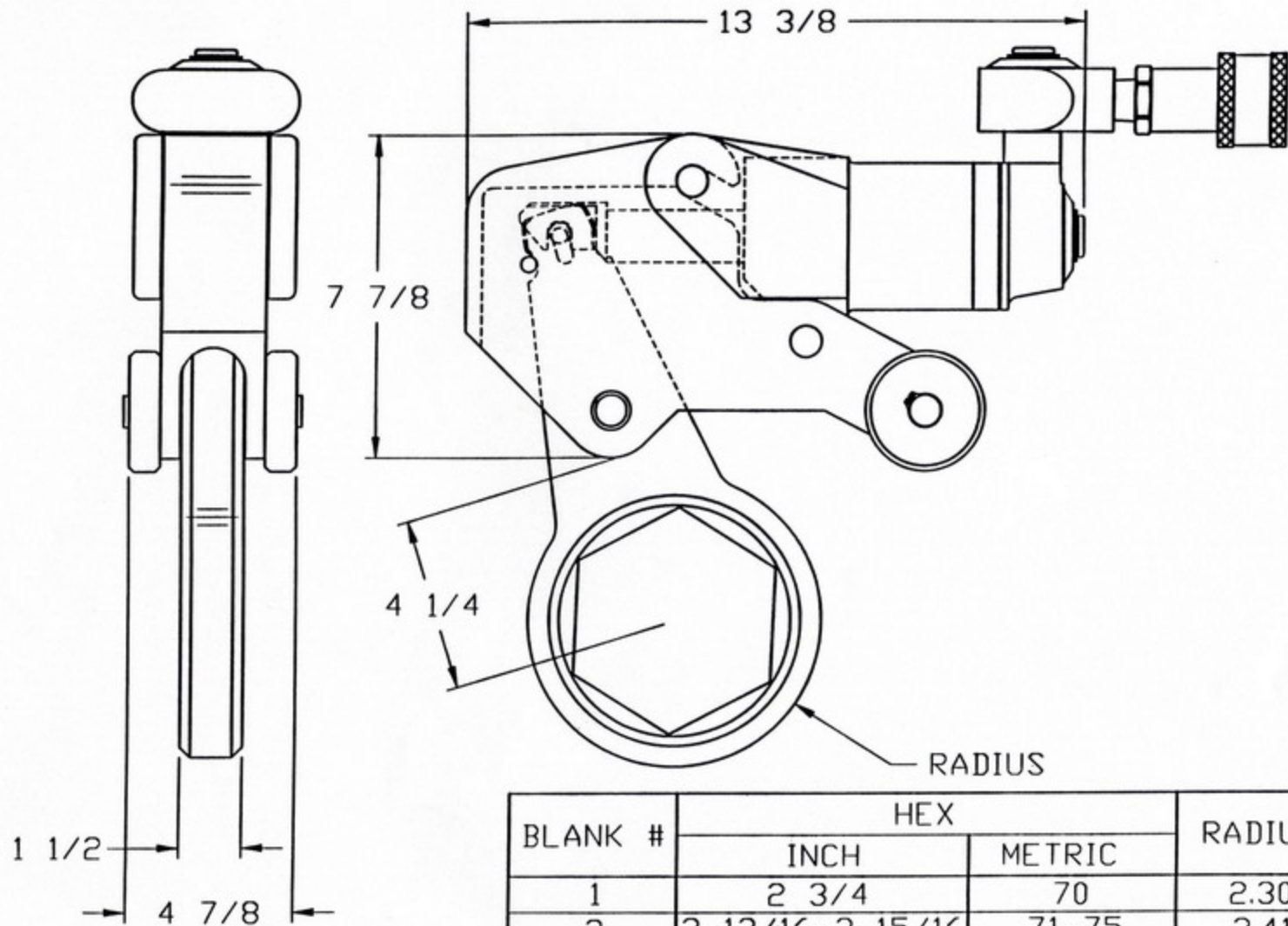
BLANK #	HEX		RADIUS
	INCH	METRIC	
1	1 7/16	36	1.30
2	1 1/2-1 5/8	37-41	1.41
3	1 11/16-1 13/16	42-46	1.52
4	1 7/8-2"	47-50	1.63
5	2 1/16-2 3/16	51-55	1.74
6	2 1/4-2 3/8	56-60	1.85
7	2 7/16-2 9/16	61-65	1.96
8	2 5/8-2 3/4	66-70	2.07
9	2 13/16-2 15/16	71-75	2.18
10	3-3 1/8	76-80	2.30



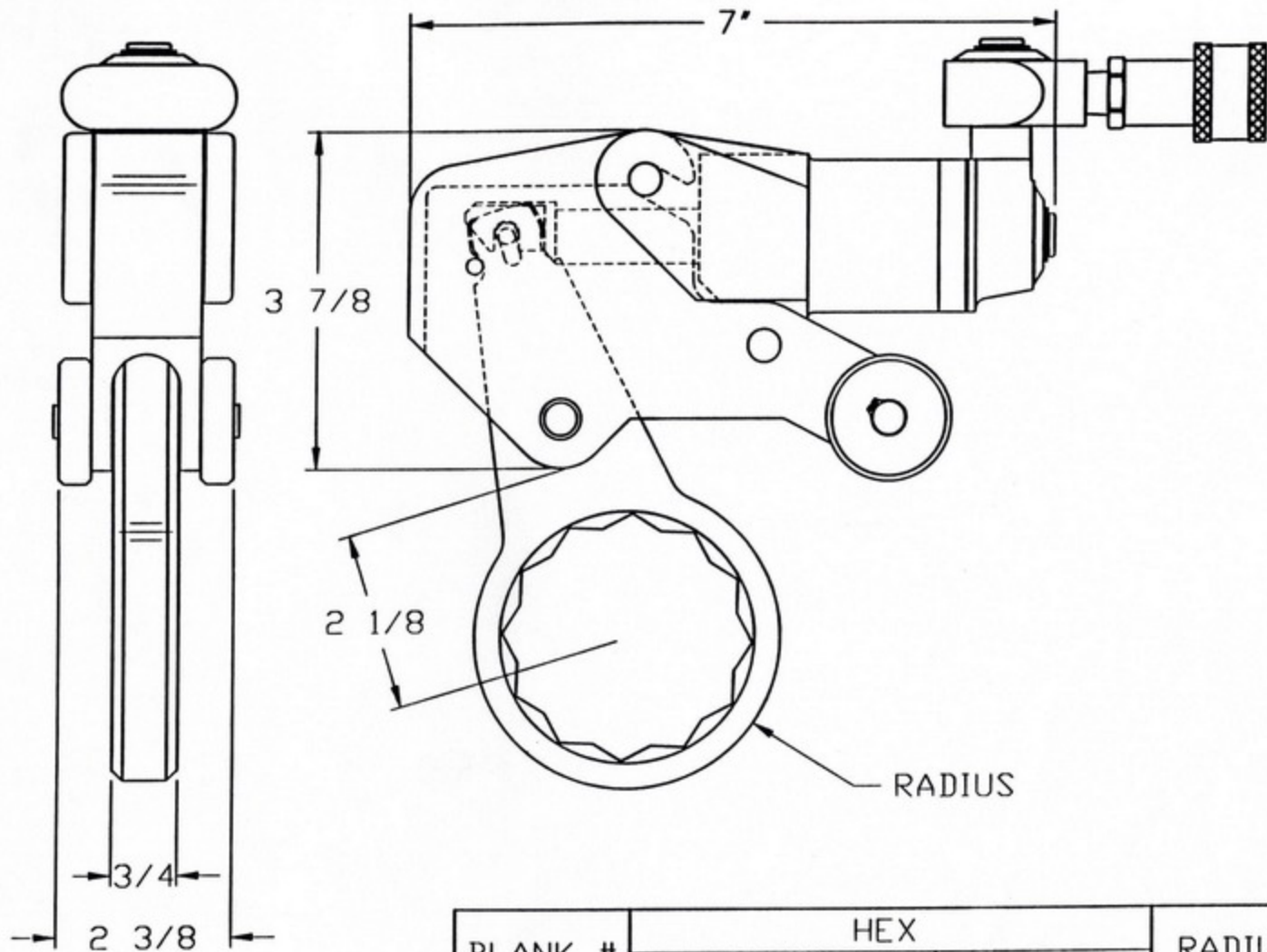


8XLCT AB TYPE  
RATCHET LINK

BLANK #	HEX		RADIUS
	INCH	METRIC	
1	2"	50	1.74
2	2 1/16-2 3/16	51-55	1.85
3	2 1/4-2 3/8	56-60	1.96
4	2 7/16-2 9/16	61-65	2.07
5	2 5/8-2 3/4	66-70	2.18
6	2 13/16-2 15/16	71-75	2.30
7	3-3 1/8	76-80	2.41
8	3 3/16-3 3/8	81-85	2.53
9	3 7/16-3 1/2	86-90	2.64
10	3 9/16-3 3/4	91-95	2.76
11	3 13/16-3 15/16	96-100	2.87

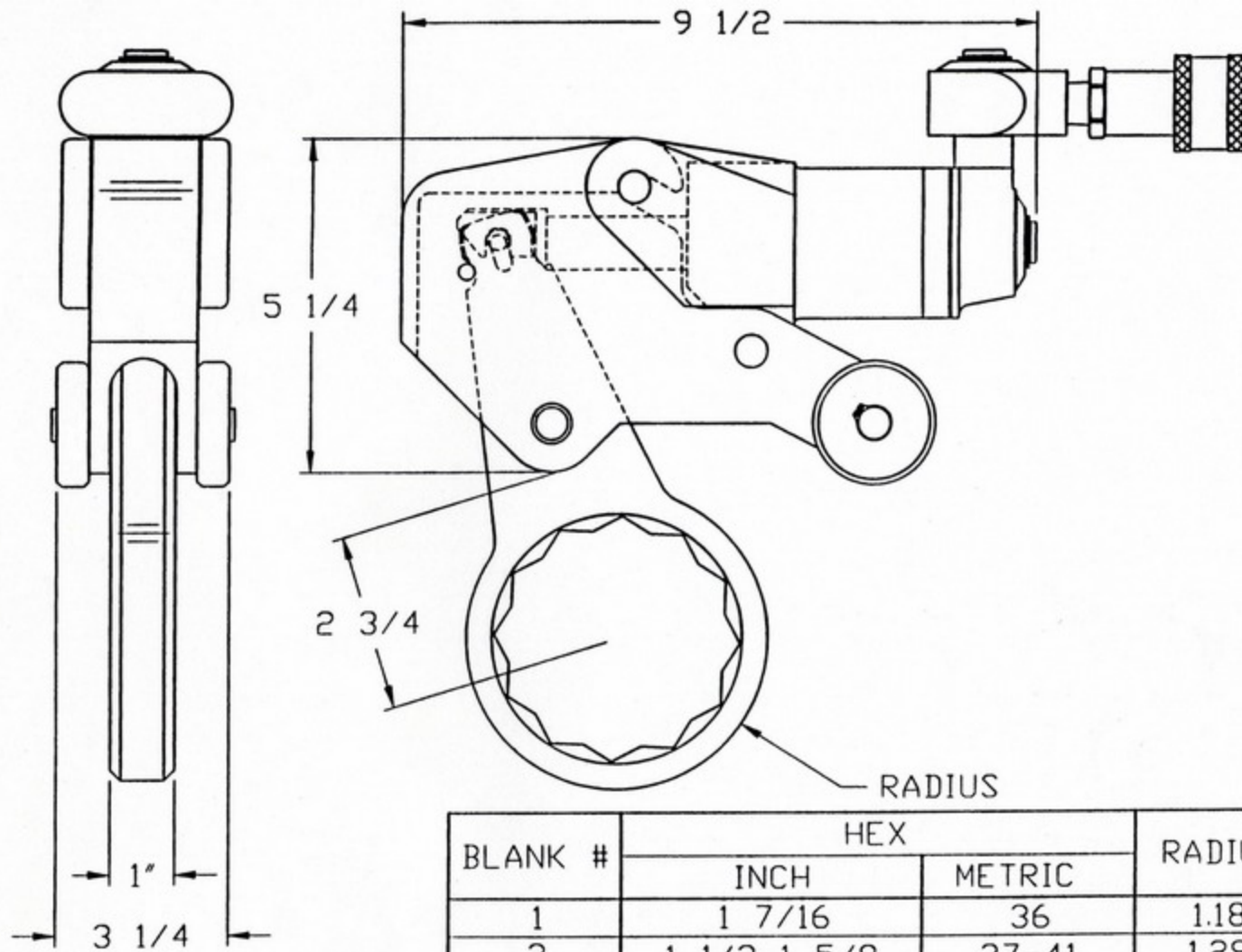


14XLCT AB TYPE  
RATCHET LINK



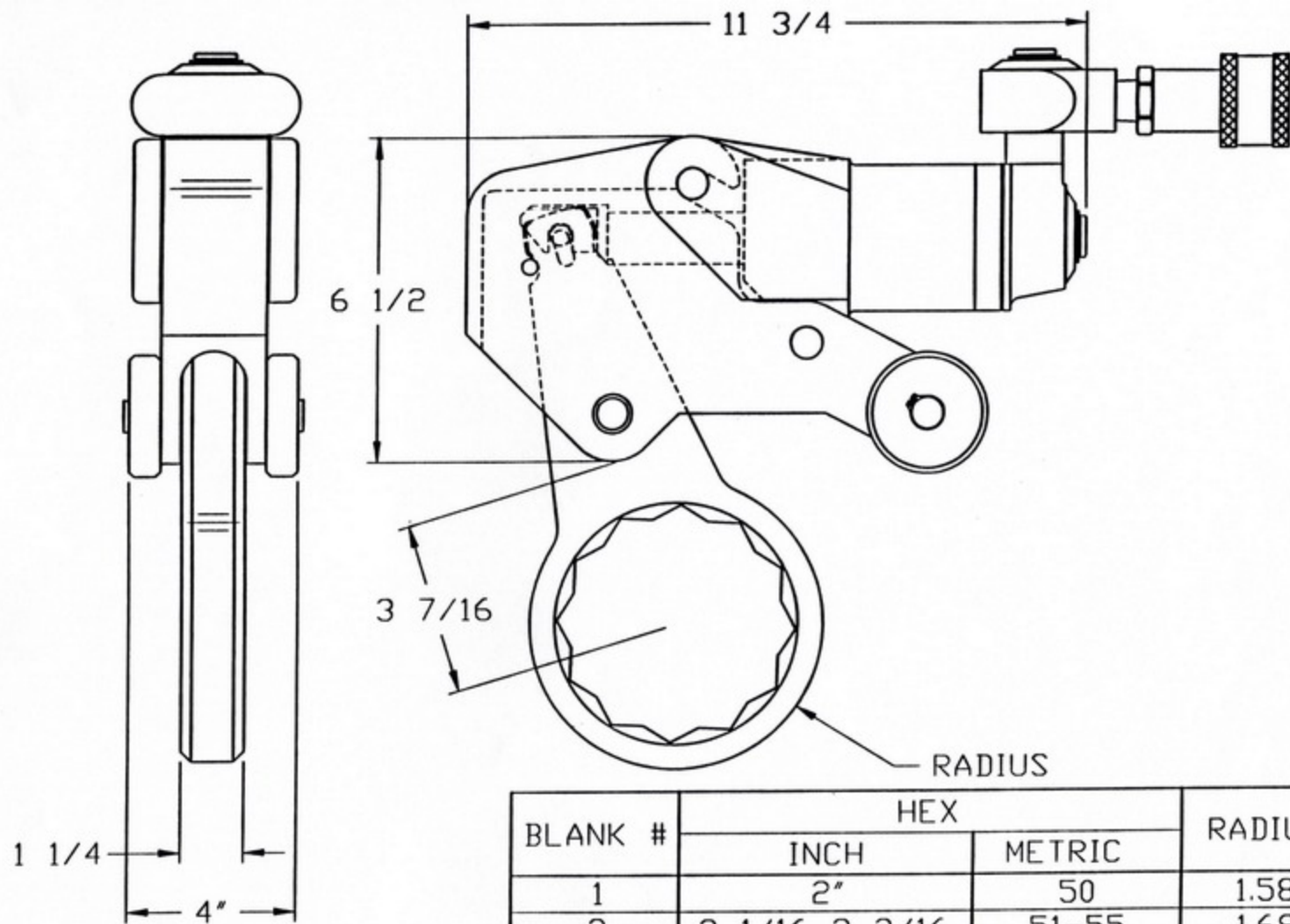
2XLCT AB TYPE  
SPANNER LINK

BLANK #	HEX		RADIUS
	INCH	METRIC	
1	7/8	22	.76
2	15/16-1 1/8	23-27	.90
3	1 3/16-1 1/4	28-32	.97
4	1 5/16-1 1/2	33-36	1.08
5	1 9/16-1 5/8	37-41	1.23
6	1 11/16-1 7/8	42-46	1.37
7	1 15/16-2 3/16	47-55	1.52
8	2 1/4-2 3/8	56-60	1.63



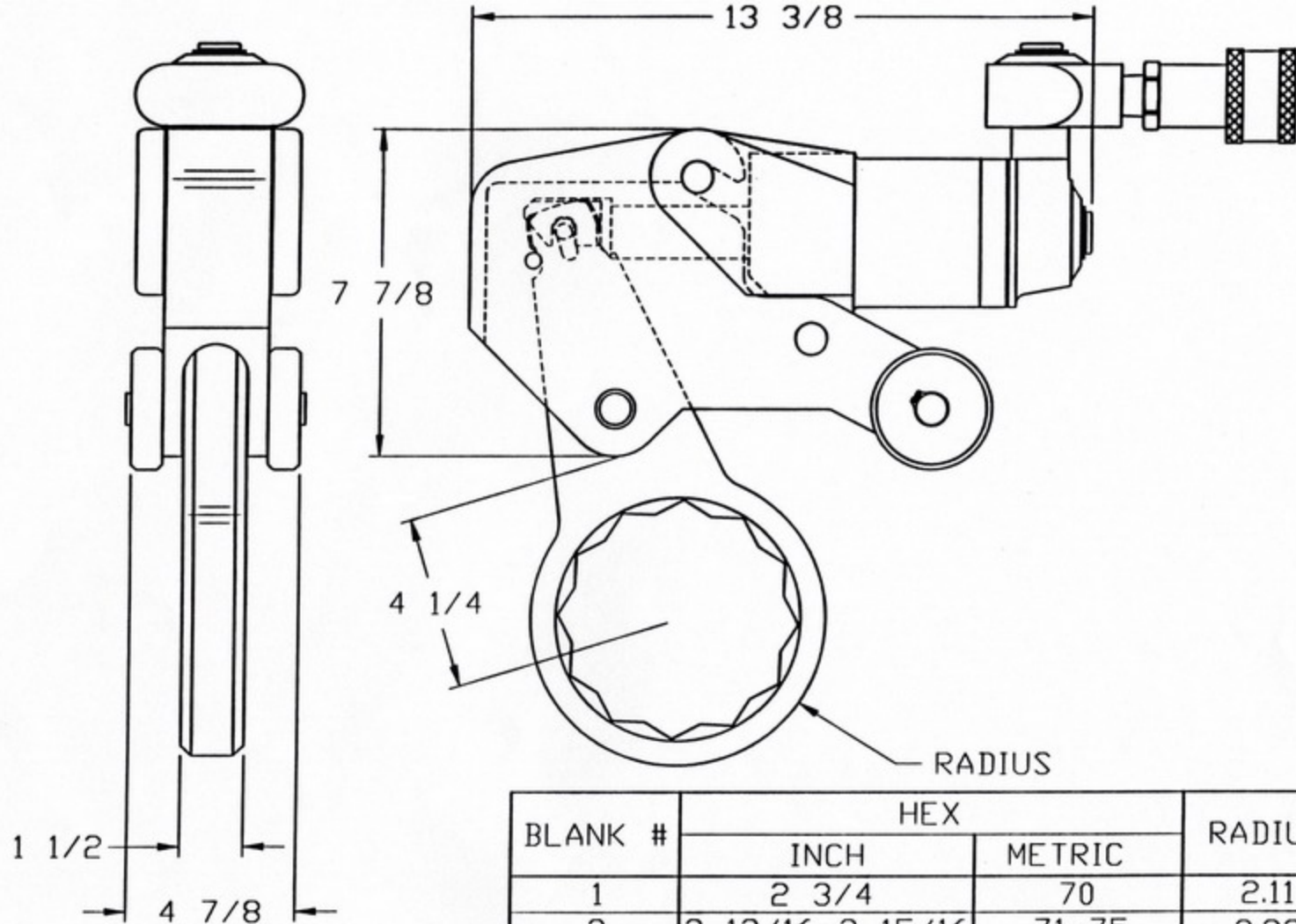
4XLCT AB TYPE  
SPANNER LINK

BLANK #	HEX		RADIUS
	INCH	METRIC	
1	1 7/16	36	1.18
2	1 1/2-1 5/8	37-41	1.29
3	1 11/16-1 13/16	42-46	1.40
4	1 7/8-2"	47-50	1.51
5	2 1/16-2 3/16	51-55	1.62
6	2 1/4-2 3/8	56-60	1.77
7	2 7/16-2 9/16	61-65	1.84
8	2 5/8-2 3/4	66-70	1.95
9	2 13/16-2 15/16	71-75	2.05
10	3-3 1/8	76-80	2.18



8XLCT AB TYPE  
SPANNER LINK

BLANK #	HEX		RADIUS
	INCH	METRIC	
1	2"	50	1.58
2	2 1/16-2 3/16	51-55	1.69
3	2 1/4-2 3/8	56-60	1.80
4	2 7/16-2 9/16	61-65	1.91
5	2 5/8-2 3/4	66-70	2.02
6	2 13/16-2 15/16	71-75	2.14
7	3-3 1/8	76-80	2.25
8	3 3/16-3 3/8	81-85	2.37
9	3 7/16-3 1/2	86-90	2.48
10	3 9/16-3 3/4	91-95	2.60
11	3 13/16-3 15/16	96-100	2.70



14XLCT AB TYPE  
SPANNER LINK